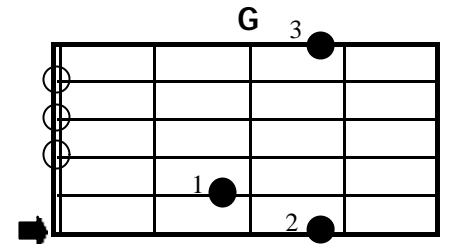
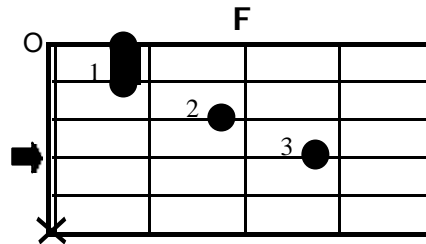
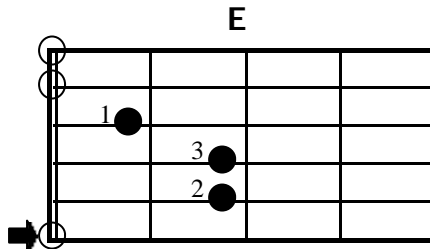
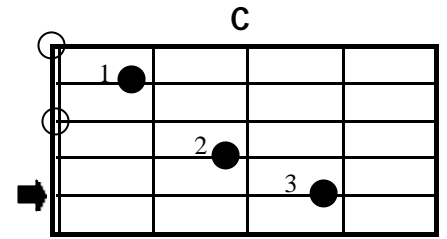
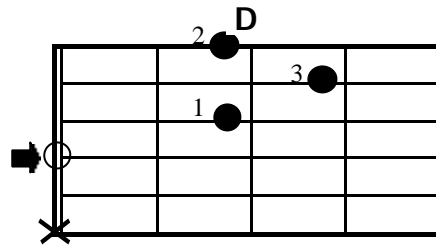
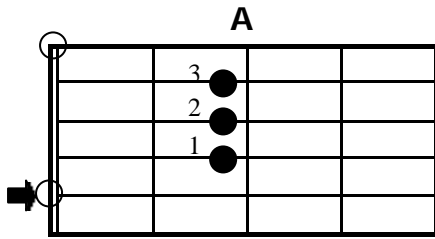


Dur - Akkorde

- ➡ = Grundton
- ✗ = Nicht anschlagen
- = Leere Saite

Die Pfeile zeigen die Grundtöne

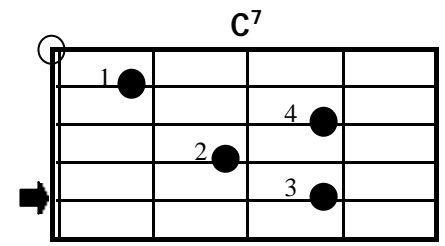
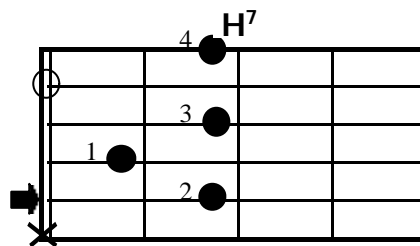
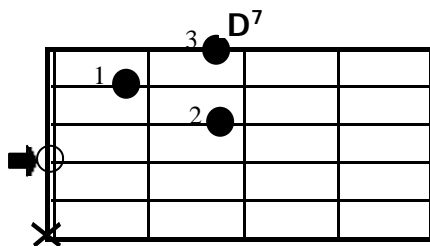
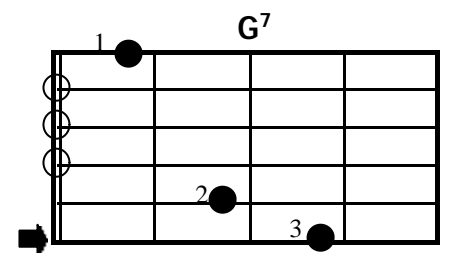
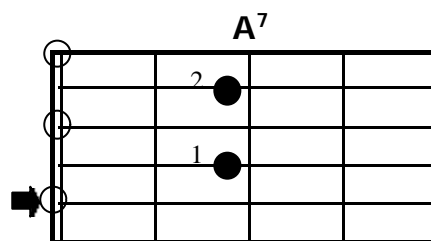
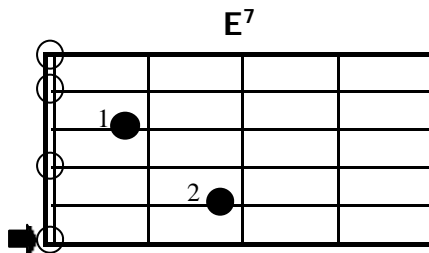
Die mit einem Kreuz bezeichneten Saiten nicht mit anschlagen!



Bei dem F-Griff auch mit leerer E-Saite

ist dann ein F7maj, oder auch als Faulenzer F bezeichnet.

Dominantsept - Akkorde



Moll - Akkorde

